

ALL-PURE

**316
Stainless Steel
1", 1-1/2" and 2"**



The MEGGA line of high-purity pumps are constructed of FDA compliant materials and are specifically designed for the food, pharmaceutical and cosmetic industries.

Air systems are lube free, non-freeze and non-stalling.

The 316 stainless steel interior and exterior surfaces have been passivated for purity.

Three elastomer combinations are available to meet abrasion, temperature and chemical compatibility.

- Teflon® PTFE
- Sanitary Hytrel®/nitrile combination
- Sanitary Santoprene®/EPDM combination



All pumps feature a sanitary clamp fitting

MEGGA

AIR-DRIVEN DOUBLE DIAPHRAGM PUMPS

1"

MODELS:

PAM10P-SGT (Teflon® PTFE) 42 lbs.
PAM10P-SHE (Sanitary Hytrel®/Nitrile) 42 lbs.
PAM10P-SSA (Sanitary Santoprene®/EPDM) 42 lbs.

SPECIFICATIONS:

Capacity:
Adjustable 0 to 40 GPM (151 liters/min.)

Maximum Temperature:
All Models 200°F (93°C)

Maximum Air Pressure:
All Models 100 PSI (6,8 bar)

Minimum Air Pressure:
All Models 20 PSI (1,4 bar)

Dry Lift Capacity @ 100 PSI (6,8 bars):
Models w/Teflon Balls 10 ft. (3 meters)
Other Models 15 ft. (4,5 meters)

Maximum Solids: 1/4" or (6,4 mm)

Air Supply:
Inlet 1/4" NPT Female
Outlet 3/4" NPT Female

Fluid Inlet/Discharge:
All Models 1" Sanitary Fitting

1 1/2"

MODELS:

PAM15P-SGT (Teflon® PTFE) 113 lbs.
PAM15P-SHE (Sanitary Hytrel®/Nitrile) 113 lbs.
PAM15P-SSA (Sanitary Santoprene®/EPDM) 113 lbs.

SPECIFICATIONS:

Capacity:
Adjustable 0 to 95 GPM (360 liters/min.)

Maximum Temperature:
All Models 200°F (93°C)

Maximum Air Pressure:
All Models 100 PSI (6,8 bar)

Minimum Air Pressure:
All Models 20 PSI (1,4 bar)

Dry Lift Capacity @ 100 PSI (6,8 bars):
Models w/Teflon Balls 10 ft. (3 meters)
Other Models 15 ft. (4,5 meters)

Maximum Solids: 1/4" or (6,4 mm)

Air Supply:
Inlet 3/4" NPT Female
Outlet 3/4" NPT Female

Fluid Inlet/Discharge:
All Models 1-1/2" Sanitary Fitting

2"

MODELS:

PAM20P-SGT (Teflon® PTFE) 131 lbs.
PAM20P-SHE (Sanitary Hytrel®/Nitrile) 131 lbs.
PAM20P-SSA (Sanitary Santoprene®/EPDM) 131 lbs.

SPECIFICATIONS:

Capacity:
Adjustable 0 to 150 GPM (568 liters/min.)

Maximum Temperature:
All Models 200°F (93°C)

Maximum Air Pressure:
All Models 100 PSI (6,8 bar)

Minimum Air Pressure:
All Models 20 PSI (1,4 bar)

Dry Lift Capacity @ 100 PSI (6,8 bars):
Models w/Teflon Balls 10 ft. (3 meters)
Other Models 15 ft. (4,5 meters)

Maximum Solids: 1/4" or (6,4 mm)

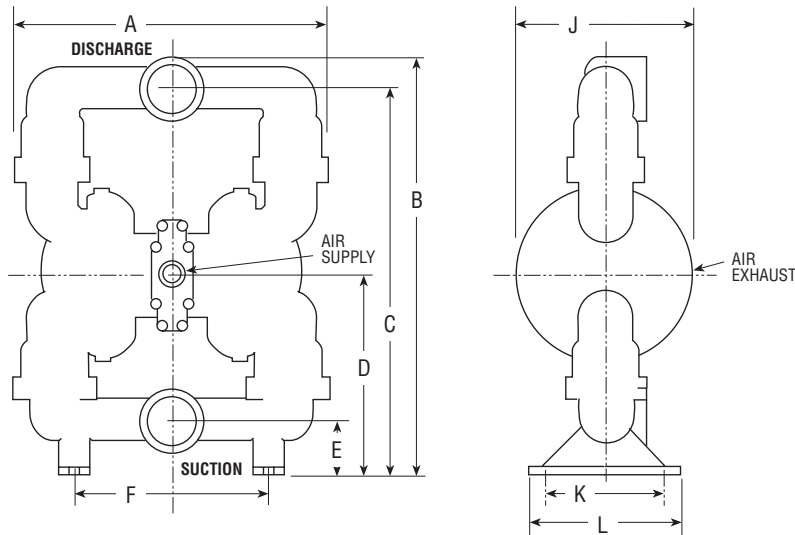
Air Supply:
Inlet 3/4" NPT Female
Outlet 3/4" NPT Female

Fluid Inlet/Discharge:
All Models 2" Sanitary Fitting

Notes:

- Muffler supplied with each pump
- Air flow control valve supplied with each pump

METALLIC



Dimensions

	1"	1 1/2"	2"
A	12.00 (305.0)	19.50 (495.0)	19.50 (495.0)
B	12.69 (322.0)	20.50 (521.0)	26.10 (663.0)
C	11.78 (299.0)	17.50 (445.0)	24.75 (629.0)
D	7.14 (181.0)	11.50 (292.0)	13.25 (336.6)
E	1.44 (37.0)	3.19 (81.0)	1.88 (47.6)
F	6.76 (172.0)	9.31 (236.4)	10.06 (255.5)
J	9.95 (253.0)	11.56 (294.0)	11.88 (301.8)
K	4.18 (106.0)	5.00 (127.0)	5.00 (127.0)
L	5.00 (127.0)	6.00 (152.4)	6.00 (152.4)

Dimensions in inches and (mm).

Ports shown facing front for dimensional purposes.

DISTRIBUTED BY:

MEGGA