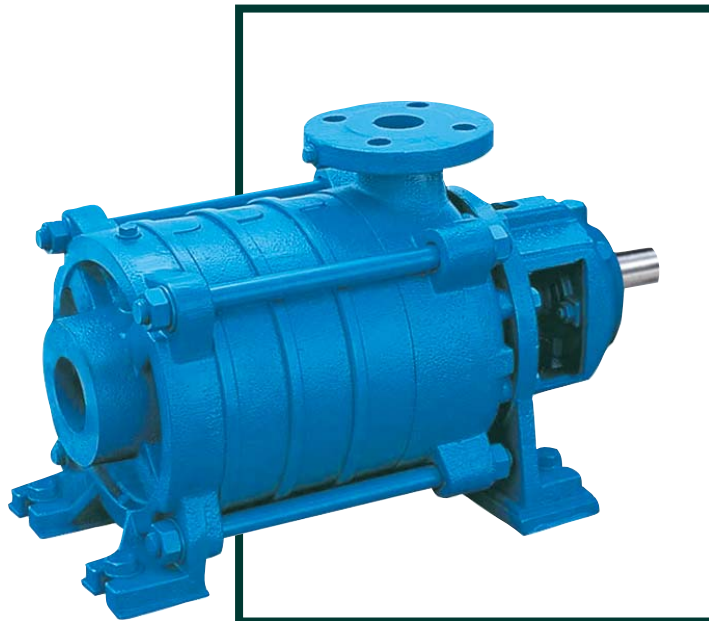


# Goulds 3355

Multistage Process Pumps



**Multiple nozzle orientations to fit your piping configurations.**



**Radial Suction Configuration. Radial nozzles are rotatable at 90° increments.**



**End Suction Configuration. Optional Inducer is available for low NPSH applications.**

# Goulds Model 3355

## Multistage Pumps Designed for a Wide Range of High Pressure Services

- Capacities to 1500 GPM (340 m<sup>3</sup>/hr)
- Heads to 1640 feet (500 m)
- Temperatures to 280° F (140° C)
- Pressures to 800 psig (55 bar)

## Performance Features for High Pressure Services

### Improved Reliability

- Heavy duty bearing design
- No external balance lines
- Internal seal flushing
- Metal to metal casing fits

### Ease of Maintenance

- Modular design
- Off-the-shelf components
- Fully interchangeable stages
- No balancing drum/disc
- Fewer parts than traditional designs
- Metal fits guarantee alignment
- No flush/bypass lines
- Easily retrofitted

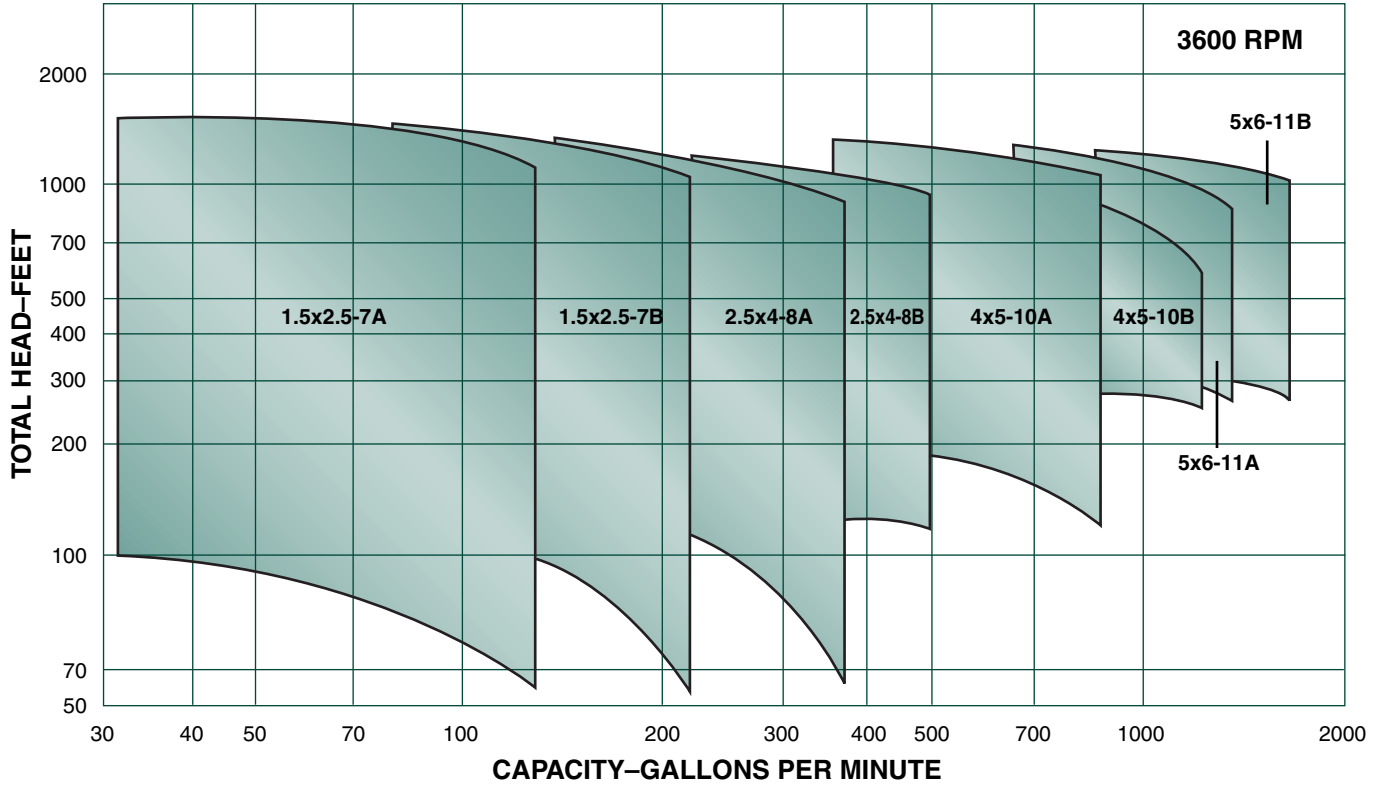
### Safety

- ANSI B15.1 Coupling Guard
- Fully confined stage o-rings
- Internal flushing & balance
- Raised face flanges

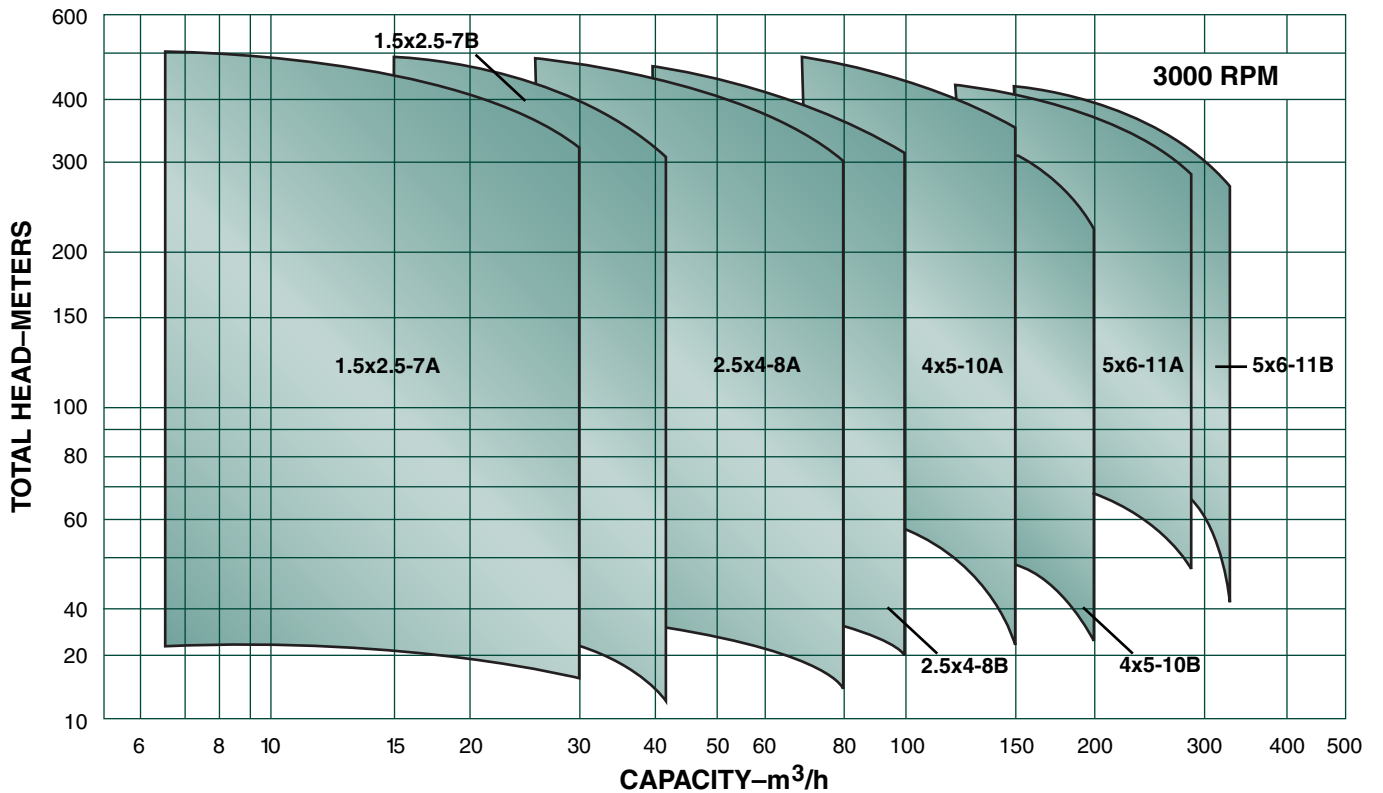
## Services

Boiler Feed  
Condensate Return  
Deaeration  
Reverse Osmosis  
Shower/Spray Service  
Mine De-watering  
Cleaning Systems  
Seal Water Booster  
Product Transfer  
Reactor Feed  
Pressure Boosting

# Hydraulic Coverage 60 Hz/3600 rpm



# Hydraulic Coverage 50 Hz/3000 rpm

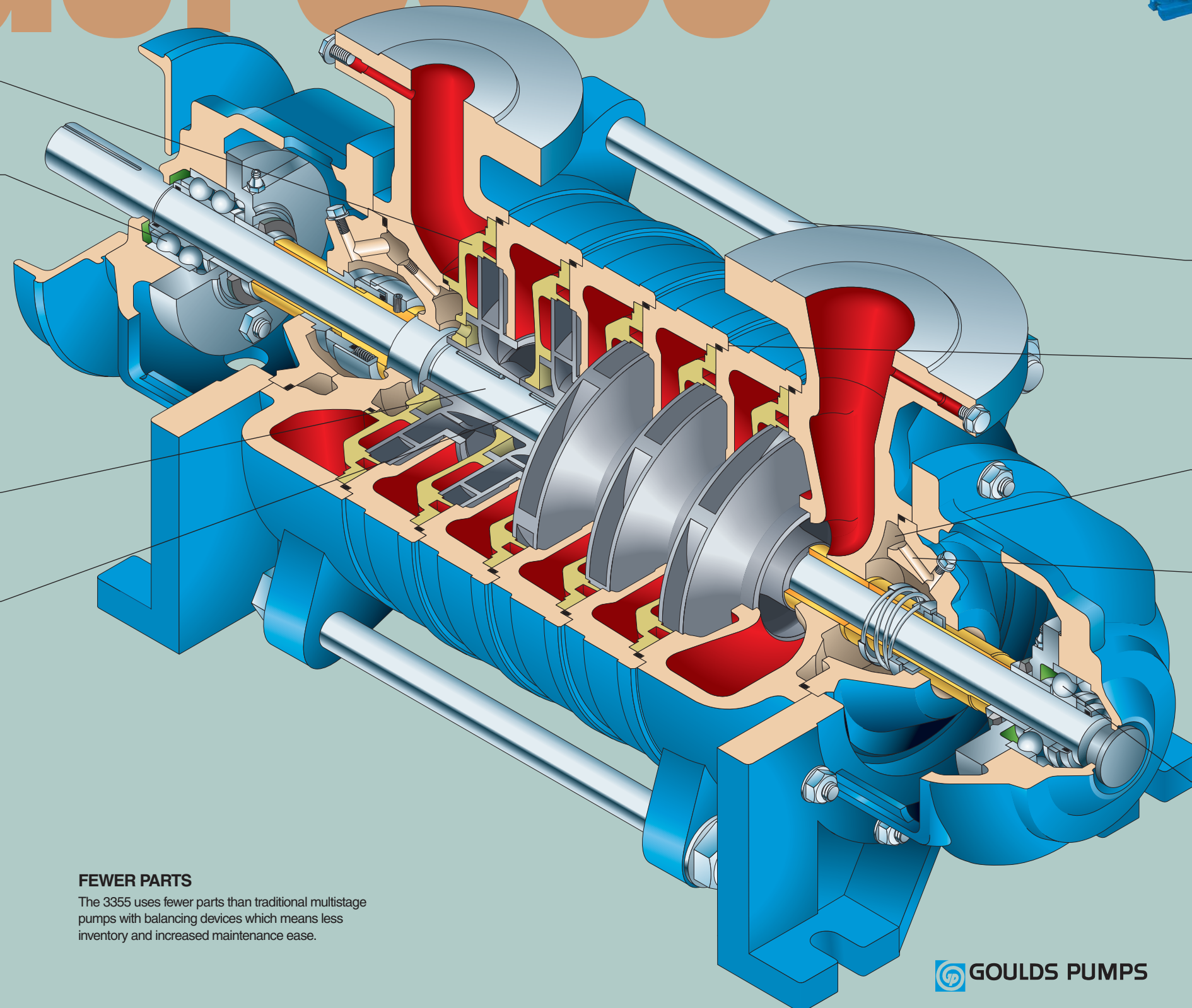


# Rugged Design Features for Wide Range of Services

# Model 3355



The 3355 is also available in End Suction configuration.



## DIFFUSERS

Eliminates radial loads to assure long bearing life.

## ANGULAR CONTACT, DOUBLE-ROW THRUST BEARINGS

Can carry a thrust load in either direction.

## INTERNAL BALANCING

Eliminates the need for balance lines outside the pump.

## WEAR RINGS

Optional case wear rings available.

## SHAFT

Standard material is 12-13% Chrome for improved shaft strengths and corrosion resistance.

## KEYED IMPELLERS

Offset keys ensure rotational shaft balance.

## PRODUCT LUBRICATED BEARINGS (ES Configuration)

Frontal sleeve bearing is located behind first stage the impeller for improved performance and reliability.

## HIGH STRENGTH TIE RODS

Bolting machined to SAE standards for easy maintenance using high tensile strength steel.

## INTERSTAGE CASING FITS

Metal fits ensure proper alignment of the stages at any temperature. No deflection due to o-ring-fits.

## SEAL CHAMBER

Taper Bore design eliminates the worry associated with venting. Improved flow to the seal helps extend seal life.

## INTERNAL SEAL FLUSHING

Special internal channels ensure the seal always has sufficient flushing fluid.

## MULTIPLE HYDRAULICS

Two impeller/diffuser combinations per size maximizes efficiency at all conditions of service.

## DEEP-GROOVE BALL BEARINGS

Are unconstrained to accommodate thermal expansion.

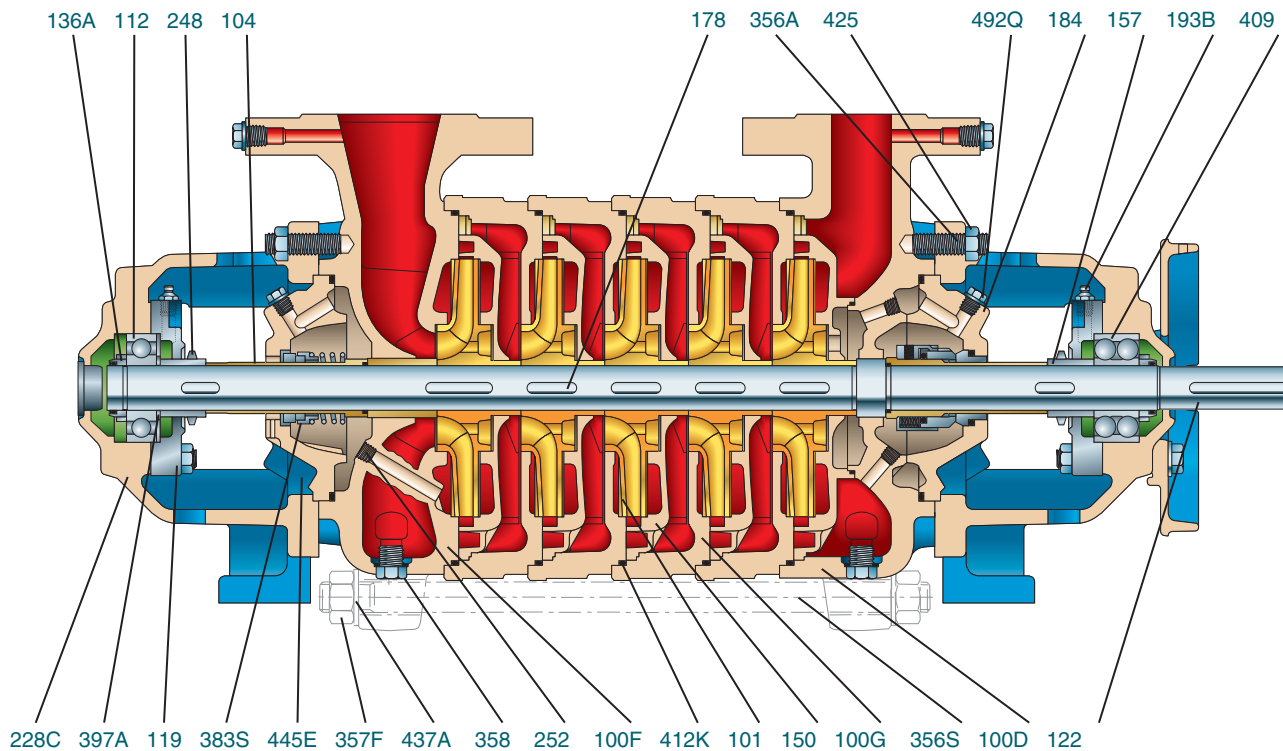
## FEWER PARTS

The 3355 uses fewer parts than traditional multistage pumps with balancing devices which means less inventory and increased maintenance ease.



An optional inducer is available on the End Suction configuration for low NPSH applications.

# Sectional View Model 3355



## Parts List and Materials of Construction

Item Number	Part Name	Material		
		Cast Iron	C/SS Fitted	All Stainless Steel
100F	Casing (Suction)	Ductile Iron (1)	Ductile Iron (1)	Stainless Steel (3)
100D	Casing (Discharge)	Ductile Iron (2)	Ductile Iron (2)	Stainless Steel
101	Impeller	Cast Iron	Stainless Steel	Stainless Steel (4)
150/150L	Diffuser	Cast Iron	Cast Iron	Stainless Steel
103	Case Wear Ring (Optional)	Stainless Steel	Stainless Steel	Stainless Steel
228C	Bearing Bracket	Cast Iron	Cast Iron	Cast Iron
119	Bearing Cover	Cast Iron	Cast Iron	Cast Iron
184	Seal Cover	Cast Iron	Cast Iron	Stainless Steel
197A	Bearing - Bushing (5)	Bronze	Bronze	Bronze
122	Shaft	12% Chrome	12% Chrome	Duplex St. St.
104/126	Sleeve	12% Chrome	12% Chrome	Duplex St. St.
356S	Tie Rod	Carbon Steel	Carbon Steel	Carbon Steel
136A	Bearing Nut	Carbon Steel	Carbon Steel	Carbon Steel
100G	Stage Casing	Cast Iron	Cast Iron	Stainless Steel
157	Spacer Sleeve	Stainless Steel	Stainless Steel	Stainless Steel
248	Thrower	Rubber	Rubber	Rubber
358	Drain Plug	Carbon Steel	Carbon Steel	Stainless Steel
252	Throttling Element		316 Ti	
193B	Grease Nipple		Carbon Steel	
383/383S	Mech Seal	depends on seal configuration		
409	Radial Ball Bearing	Steel	Steel	Steel
112	Radial Ball Bearing	Steel	Steel	Steel
357F	Nut		Carbon Steel	
425	Nut		Carbon Steel	
412K	O-Ring - all	EPDM	EPDM	EPDM
178	Key - all	12% Chrome		Duplex Stainless Steel
356A	Stud		Carbon Steel	
445E	Pin		316 SS	
397A	Disc Spacer		Carbon Steel	
492Q	Plug		Carbon Steel	
437A	Washer - all		Carbon Steel	

(1) Standard flange rating is 150#RF for radial suction and 150#RF for end suction. End suction casing is cast iron material.

(2) Standard flange rating is 300#RF. Casing material is stainless steel with optional 600#RF flange.

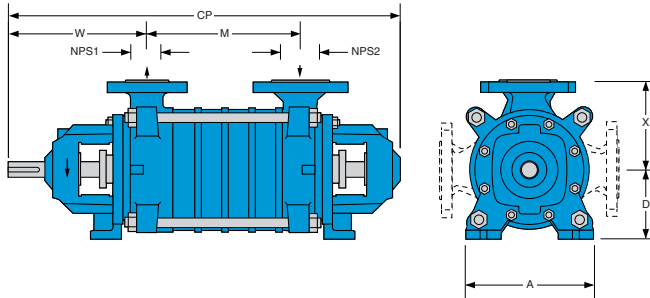
(3) Standard flange rating is 300#RF for radial suction and 150#RF for end suction.

(4) Standard flange rating is 600#RF.

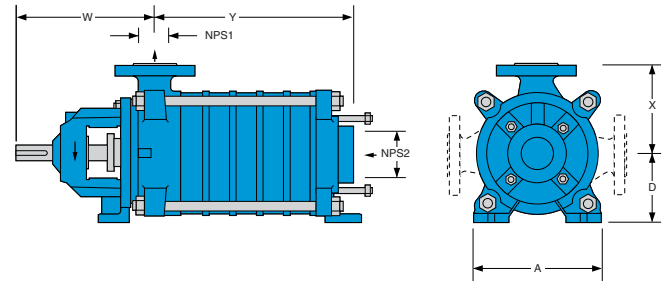
(5) Only on end suction configuration.

# Dimensions Model 3355

## Radial Suction



## End Suction



DIMENSIONS						
Pump Size	NPS1	NPS2	A	W	D	X
1.5x2.5-7	1.5	2.5	9.06	11.02	5.51	7.09
2.5x4-8	2.5	4	9.84	12.40	6.30	8.27
4x5-10	4	5	13.38	14.58	8.27	9.84
5x6-11	5	6	15.75	17.72	9.84	11.81

Pump Size		NUMBER OF STAGES														
		2	3	4	5	6	7	8	9	10	11	12	13	14	15	16
1.5x2.5-7	M	5.71	7.87	10.04	12.20	14.37	16.54	18.70	20.87	23.03	25.20	27.36	29.53	31.69	33.86	36.02
	CP	24.72	26.88	29.05	31.21	33.38	35.55	37.71	39.88	42.04	44.21	46.37	48.54	50.70	52.87	55.03
	Y	9.44	11.61	13.78	15.94	18.11	20.28	22.44	24.60	26.77	28.94	31.10	33.27	35.43	37.60	39.77
2.5x4-8	M	7.09	9.84	12.60	15.35	18.11	20.87	23.62	26.38	29.13	31.88	34.65	37.40			
	CP	28.54	31.29	34.05	36.80	39.56	42.32	45.07	47.83	50.58	53.33	56.10	58.85			
	Y	11.02	13.78	16.54	19.29	22.05	24.80	27.56	30.31	33.07	35.83	38.58	41.33			
4x5-10	M	10.03	13.39	16.73	20.08	23.43	26.77	30.12	33.47							
	CP	35.26	38.62	41.96	45.31	48.66	52.00	55.35	58.70							
	Y	15.75	19.09	22.44	25.79	29.13	32.48	35.83	39.18							
5x6-11	M	12.40	16.54	20.67	24.80	28.94	33.07									
	CP	43.31	47.45	51.58	55.71	59.85	63.98									
	Y	18.90	23.03	27.17	31.30	35.43	39.57									

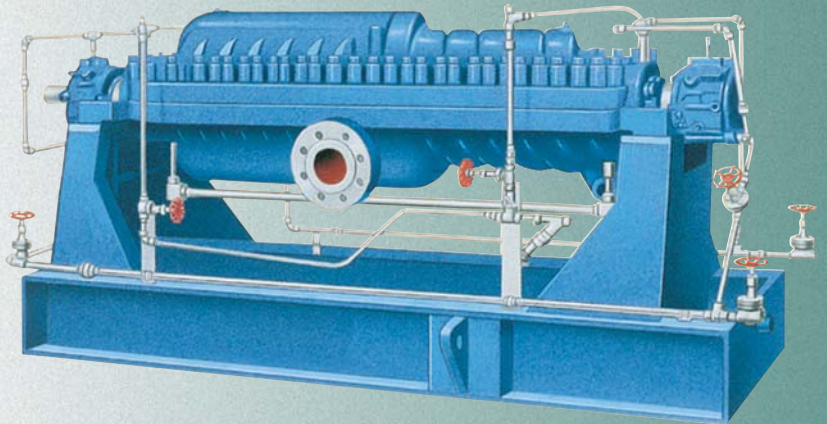
\* Note: Add 0.79" to "Y" dim for size 2.5x4-8 with inducer design.

# Other Goulds Multistage Pumps

Goulds offers multistage pumps for various services covering a wide range of capacities and heads

## 3600

- Capacities to 2,600 GPM (590 m<sup>3</sup>/h)
- Heads to 5,500 feet TDH (1675 m)
- Temperatures to 400° F (205° C)
- Working Press to 2,500 PSI (172 bar)



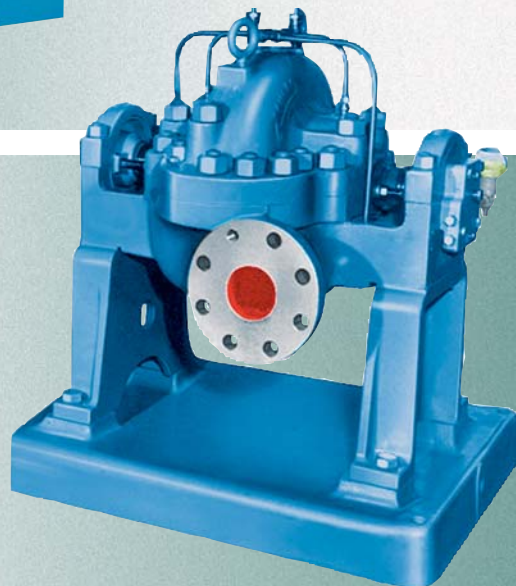
## 3311

- Capacities to 1,100 GPM (250 m<sup>3</sup>/h)
- Heads to 5,250 feet TDH (1600 m)
- Temperatures to 350° F (180° C)
- Working Press to 2,320 PSI (160 bar)



## 3316

- Capacities to 3,000 GPM (681 m<sup>3</sup>/h)
- Heads to 1,000 feet TDH (630 m)
- Temperatures to 350° F (180° C)
- Working Press to 550 PSI (38 bar)



Visit our website at [www.gouldspumps.com](http://www.gouldspumps.com)