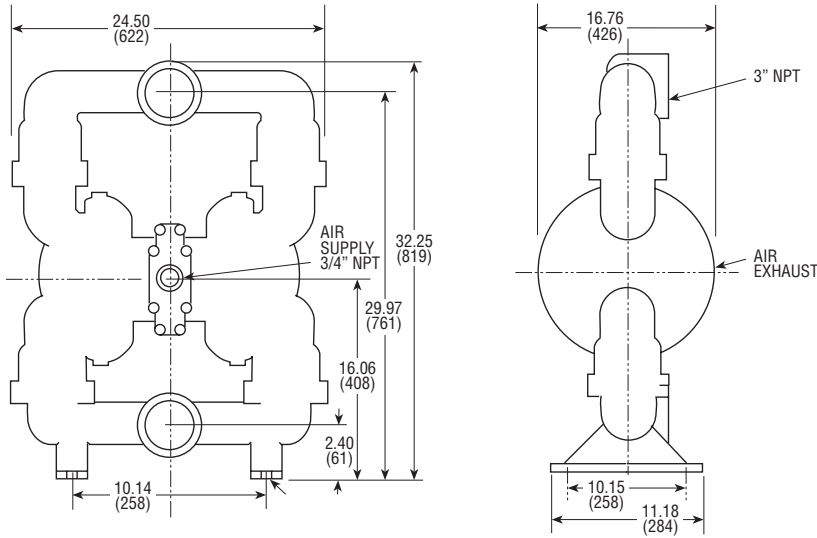


# SERIES PA SPECIFICATION SHEET

# 3"



**METALLIC** Dimensions in inches and (mm). Ports shown facing front for dimensional purposes.



## METALLIC MODELS:

- PAM30-AGE** (Aluminum/Urethane/Nitrile) 130 lbs. (29 kg.)
- PAM30-ASA** (Aluminum/EPDM/Santoprene) 130 lbs. (29 kg.)
- PAM30-AGT** (Aluminum/Teflon) 130 lbs. (29 kg.)

## SPECIFICATIONS:

### Capacity:

Adjustable..... 0 to 255 GPM (965 liters/min.)

### Maximum Temperature:

All Models..... 200°F (93°C)

### Maximum Air Pressure:

All Models..... 125 PSI (8,5 bars)

### Minimum Air Pressure:

All Models..... 20 PSI (1,4 bars)

### Dry Lift Capacity @ 100 PSI (6,8 bars):

Models w/Teflon Balls..... 10 ft. (3 meters)  
Other Models..... 15 ft. (4,5 meters)

**Maximum Solids:**..... 7/16" or (11,1 mm)

### Air Supply:

Inlet..... 3/4" NPT Female  
Outlet..... 3/4" NPT Female

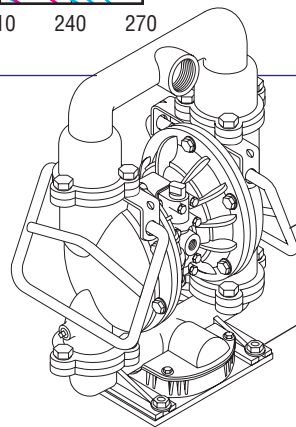
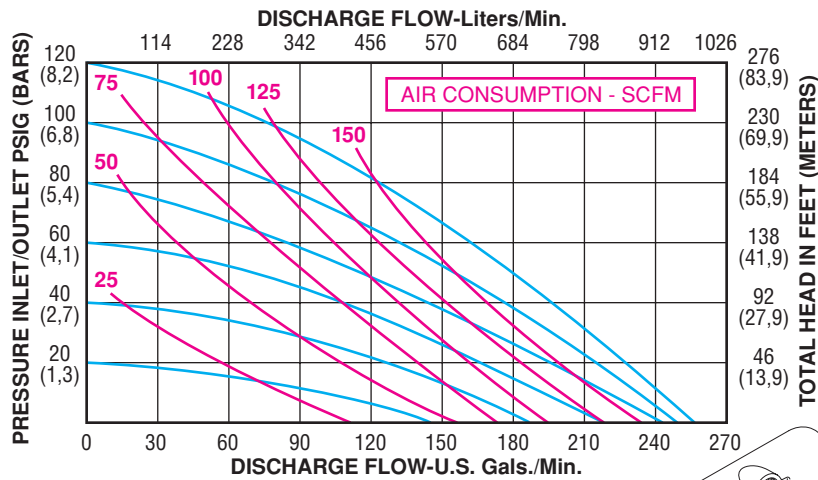
### Fluid Inlet/Discharge:

**Metallic Models**..... 3" NPT Female  
BSP threads available on request

### Footnotes:

- Muffler supplied with each pump
- Air flow control valve supplied with each pump

## PERFORMANCE CURVE (Based on water-flooded suction)



## 3" Pump Accessories

• **Carry Handles**  
Part No. 52000  
(Kit contains 2 handles)

• **Strainer Base**  
Part No. 53000

DISTRIBUTED BY:

