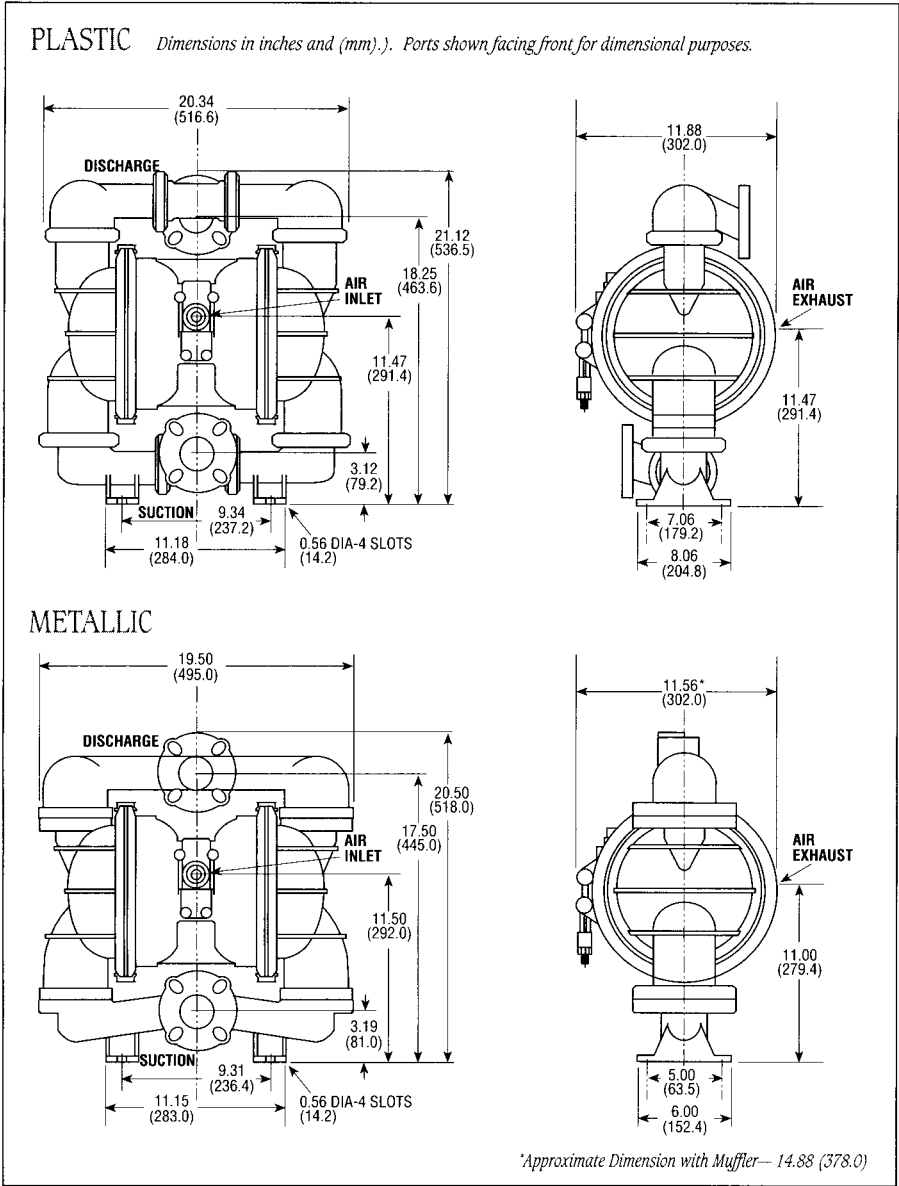




SPECIFICATION SHEET

SERIES PA 1 1/2" PUMPS



PLASTIC MODELS:

PAP15-PGE (Polypro/Geolast)	52 lbs. (23,6 kg.)
PAP15-PGT (Polypro/Teflon)	52 lbs. (23,6 kg.)
PAP15-KGT (PVDF/Teflon)	66 lbs. (30 kg.)

METALLIC MODELS:

PAM15 (Aluminum)	61 lbs. (27,7 kg.)
PAM15 (Stainless Steel)	131 lbs. (59 kg.)

*Optional elastomers available.
* Geolast properties are similar to that of Nitrile (Buna-N)*

- SPECIFICATIONS:**
- Capacity:** Adjustable 0 to 150 GPM (569 liters/min.)
 - Maximum Temperature:**
 - PVDF Model 200°F (93°C)
 - Other Plastic Models 150°F (66°C)
 - Metallic Models 200°F (93°C)
 - Maximum Air Pressure:**
 - PVDF Model 70 PSI (4,8 bars)
 - Other Models 100 PSI (6,8 bars)
 - Minimum Air Pressure:**
 - All Models 20 PSI (1,2 bars)
 - Dry Lift Capacity @ 100 PSI (6,8 bars):**
 - Models w/Teflon Balls 10 ft. (3 meters)
 - Other Models 15 ft. (4,5 meters)
 - Maximum Solids:** 1/4" or (6,4 mm)
 - Air Supply:**
 - Inlet 3/4" NPT Female
 - Outlet 3/4" NPT Female
 - (Air flow control valve, 3/4" NPT or BSP Female)

- Footnotes:**
- Muffler supplied with each pump
 - Air flow control valve supplied with each pump
 - Flanges are ANSI and DIN compatible
 - Flange mounting requires (4) bolts: 5/8" x 4-1/2"
 - Threaded companion flanges available

