

SERIES PA 1" PUMPS

PLASTIC MODELS:

PAP10-PGE (Polypropylene/Geolast)	19 lbs. (8,6 kg.)
PAP10-PGT (Polypropylene/Teflon)	19 lbs. (8,6 kg.)
PAP10-NGT (Nylon/Teflon)	19 lbs. (8,6 kg.)
PAP10-KGT (PVDF/Teflon)	22 lbs. (9,9 kg.)

METALLIC MODELS:

PAM10 (Stainless Steel)	42 lbs. (19,1 kg.)
PAM10 (Aluminum)	19 lbs. (8,6 kg.)

Optional elastomers available.

* Geolast properties are similar to that of Nitrile (Buna-N)

SPECIFICATIONS:

Capacity:

Adjustable.....0 to 40 GPM (152 liters/min.)

Maximum Temperature:

PVDF Model.....	200°F (93°C)
Other Plastic Models.....	150°F (66°C)
Metallic Models.....	200°F (93°C)

Maximum Air Pressure:

PVDF Model.....	70 PSI (4,8 bars)
Other Models.....	100 PSI (6,8 bars)

Minimum Air Pressure:

All Models.....20 PSI (1,2 bars)

Dry Lift Capacity @ 100 PSI (6,8 bars):

Models w/Teflon Balls.....	10 ft. (3 meters)
Other Models.....	15 ft. (4,5 meters)

Maximum Solids.....1/4" or (6,4 mm)

Air Supply:

Inlet.....	1/4" NPT Female
Outlet.....	3/4" NPT Female
(Air flow control valve, 1/4" NPT Female)	

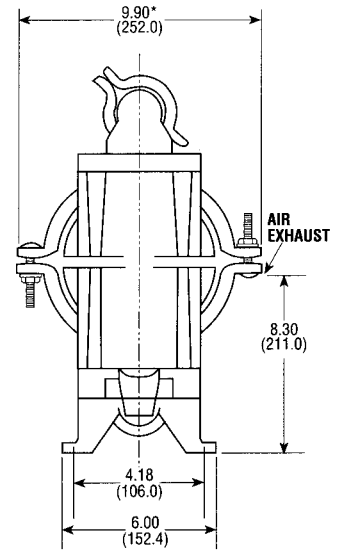
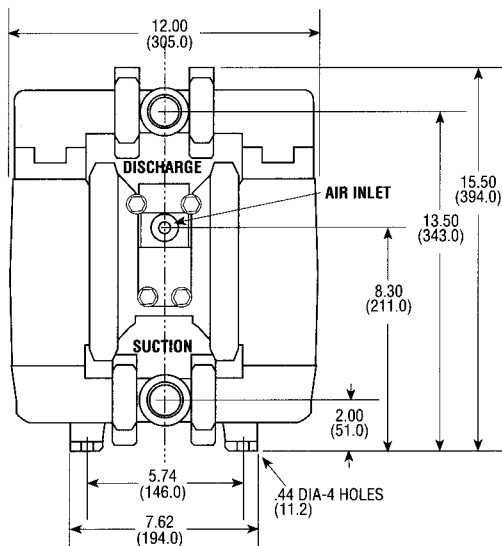
Fluid Inlet/Discharge.....1" NPT

Footnotes:

- Muffler supplied with each pump
- Air flow control valve supplied with each pump
- Dual manifold inlet/outlet capability
- BSP threads available upon request

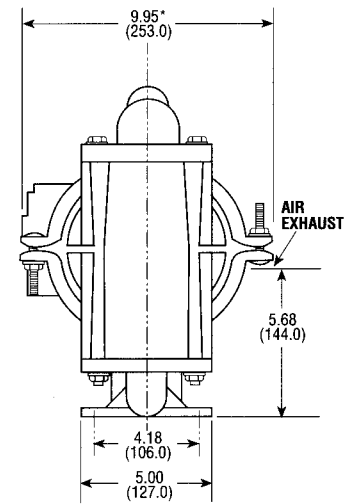
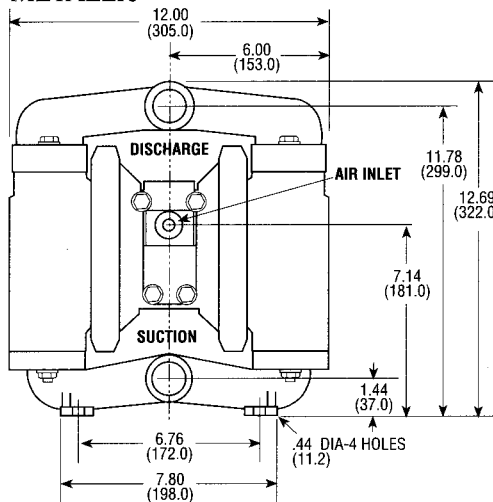
PLASTIC

Dimensions in inches and (mm). Ports shown facing front for dimensional purposes.



*Approximate Dimension with Muffler—11.57 (293.9)

METALLIC



*Approximate Dimension with Muffler—11.57 (293.9)

PERFORMANCE CURVE

