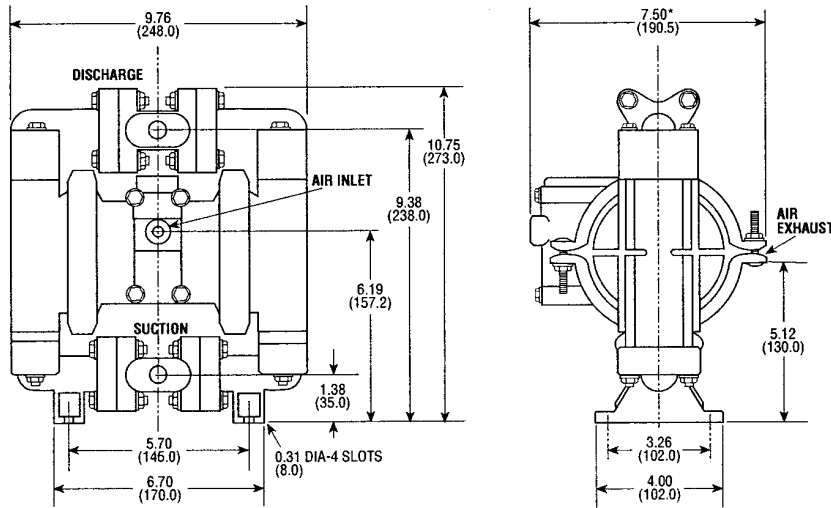




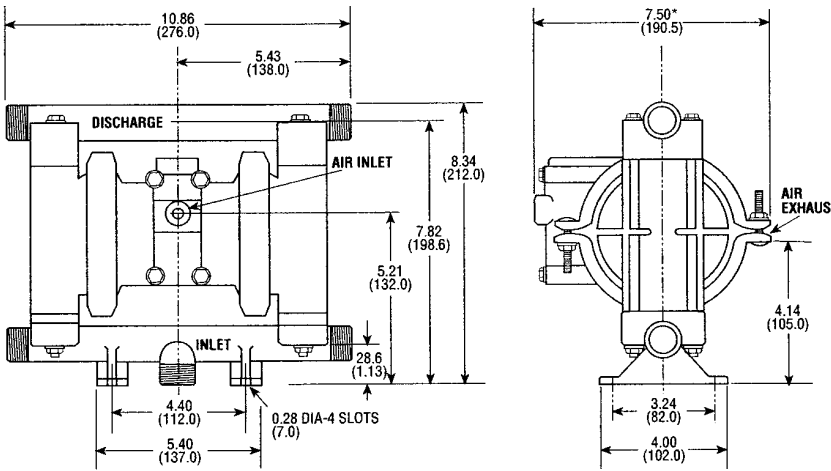
# SPECIFICATION SHEET

## SERIES PA 1/2" PUMPS

**PLASTIC** Dimensions in inches and (mm). Ports shown facing front for dimensional purposes.



**METALLIC**



\*Approximate Dimension with Muffler—8.00 (203.2)

**PLASTIC MODELS:**

PAP05-PGE (Polypropylene/Geolast)	8 lbs. (3,6 kg.)
PAP05-PGT (Polypropylene/Teflon)	8 lbs. (3,6 kg.)
PAP05-NGT (Nylon/Teflon)	8 lbs. (3,6 kg.)
PAP05-KGT (PVDF/Teflon)	11 lbs. (4,9 kg.)

**METALLIC MODELS:**

PAM05 (Stainless Steel)	16 lbs. (7,2 kg.)
PAM05 (Aluminum)	8.5 lbs. (3,8 kg.)

Optional elastomers and conductive nylon available.

\* Geolast properties are similar to that of Nitrile (Buna-N)

**SPECIFICATIONS:**

- Capacity:  
Adjustable.....0 to 14 GPM (53,2 liters/min.)
- Maximum Temperature:  
PVDF Model.....200°F (93°C)  
Other Models.....150°F (66°C)  
Metallic Models.....200°F (93°C)
- Maximum Air Pressure:  
All Models.....100 PSI (6,8 bars)
- Minimum Air Pressure:  
All Models.....20 PSI (1,2 bars)
- Dry Lift Capacity @ 100 PSI (6,8 bars):  
Models w/Teflon Balls.....10 ft. (3 meters)  
Other Models.....15 ft. (4,5 meters)
- Maximum Solids.....1/8" or (3,1 mm)

**Air Supply:**

- Inlet.....1/4" NPT Female
- Outlet.....3/8" NPT Female  
(Air flow control valve, 1/4" NPT or 1/2" BSP Female)

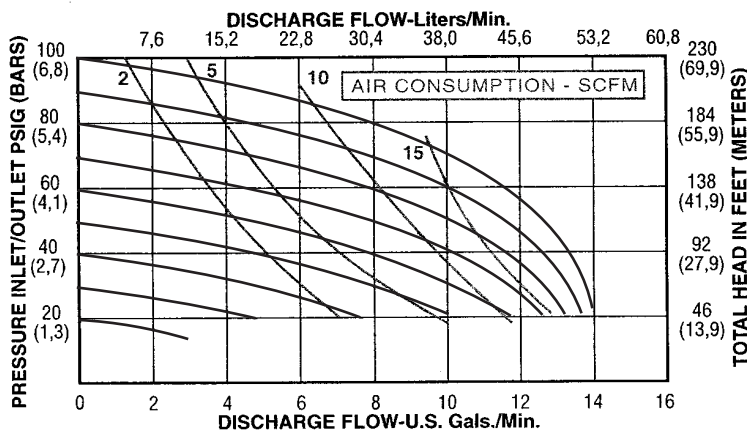
**Fluid Inlet/Discharge:**

- Plastic Models.....1/2" NPS Female
- Metallic Models..1/2" NPS Female & 3/4" NPS Male  
(BSP or NPT Compatible)

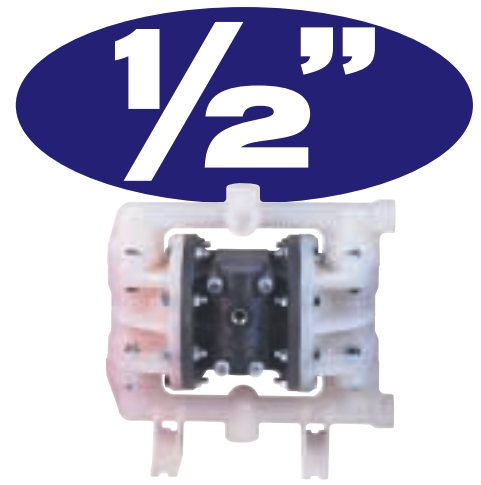
**Footnotes:**

- Muffler supplied with each pump
- Air flow control supplied with each pump
- Dual manifold inlet/outlet capability

**PERFORMANCE CURVE** (Based on water-flooded suction)



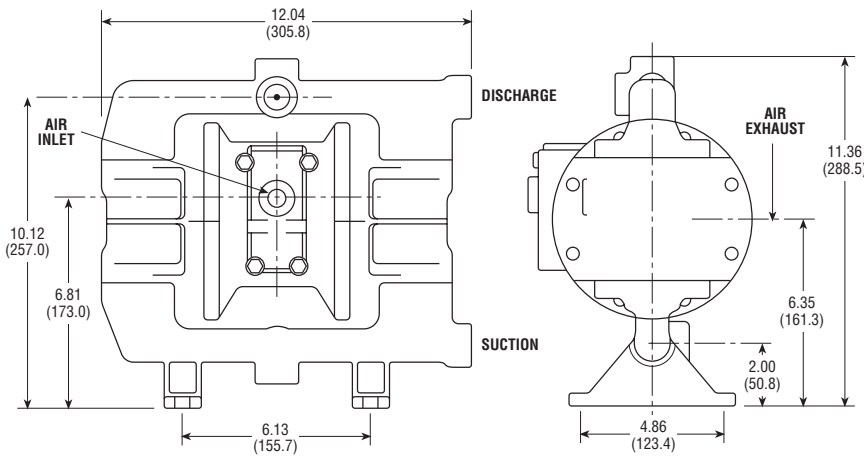
# SERIES PA SPECIFICATION SHEET



**PLASTIC**

Dimensions in inches and (mm).

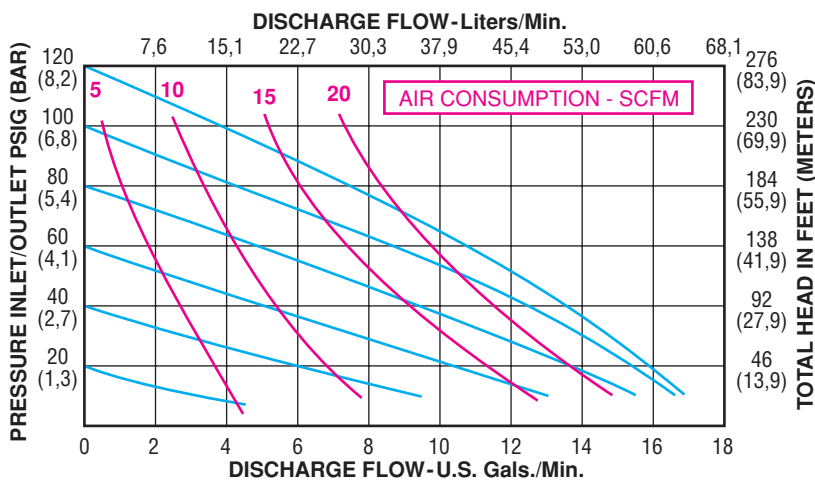
## BOLTED SERIES



### MODELS:

<b>PAP05B-PGE</b> (Polypro/Geolast®/Nitrile)	9 lbs. (4,1 kg.)
<b>PAP05B-PSA</b> (Polypro/Santoprene®/EPDM)	9 lbs. (4,1 kg.)
<b>PAP05B-PGT</b> (Polypro/Teflon®)	9 lbs. (4,1 kg.)
<b>PAP05B-NGT</b> (Nylon/Teflon®)	9 lbs. (4,1 kg.)
<b>PAP05B-NGE</b> (Nylon/Geolast®/Nitrile)	9 lbs. (4,1 kg.)
<b>PAP05B-KSA</b> (PVDF/Santoprene®/EPDM)	12 lbs. (4,1 kg.)
<b>PAP05B-KGT</b> (PVDF/Teflon®)	12 lbs. (5,4 kg.)
<b>PAP05B-CGE</b> (Cond. Nylon/Geolast®/Nitrile)	12 lbs. (5,4 kg.)
<b>PAP05B-CGT</b> (Cond. Nylon/Teflon®)	12 lbs. (5,4 kg.)

### PERFORMANCE CURVE *(Based on water-flooded suction)*



### SPECIFICATIONS:

#### Capacity:

Adjustable..... 0 - 17 GPM (64,6 liters/min.)

#### Maximum Temperature:

PVDF Model..... 200°F (93°C)  
Other Plastic Models..... 150°F (66°C)

#### Maximum Air Pressure:

All Models..... 120 PSI (8,0 bar)

#### Minimum Air Pressure:

All Models..... 20 PSI (1,2 bar)

#### Dry Lift Capacity @ 120 PSI (8 bar):

Models w/Teflon Balls..... 10 ft. (3 meters)  
Other Models..... 15 ft. (4,5 meters)

#### Maximum Solids:..... 1/8" (3,1 mm)

Optional Max-Pass Valves..... 3/8" (9 mm)

#### Air Supply:

Inlet..... 1/4" NPT Female  
Outlet..... 3/8" NPT Female

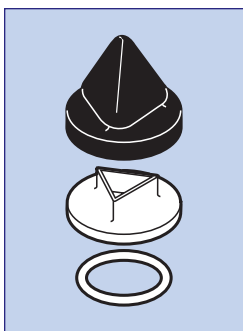
#### Fluid Inlet/Discharge:

Models..... 1/2" NPS Female

Stock models have a side port. Optional center or top port must be specified. *(Threads are BSP or NPT Compatible.)*

#### Notes:

- Muffler supplied.
- Dual manifold inlet/outlet must be specified at time of order. Fluid is not separated.



### Optional Max-Pass Valve System

- Up to 3/8" solids
- Abrasion resistant
- Elastomer selection

*Ideal for inks, paints, slurries, and other specialized applications*

DISTRIBUTED BY:

