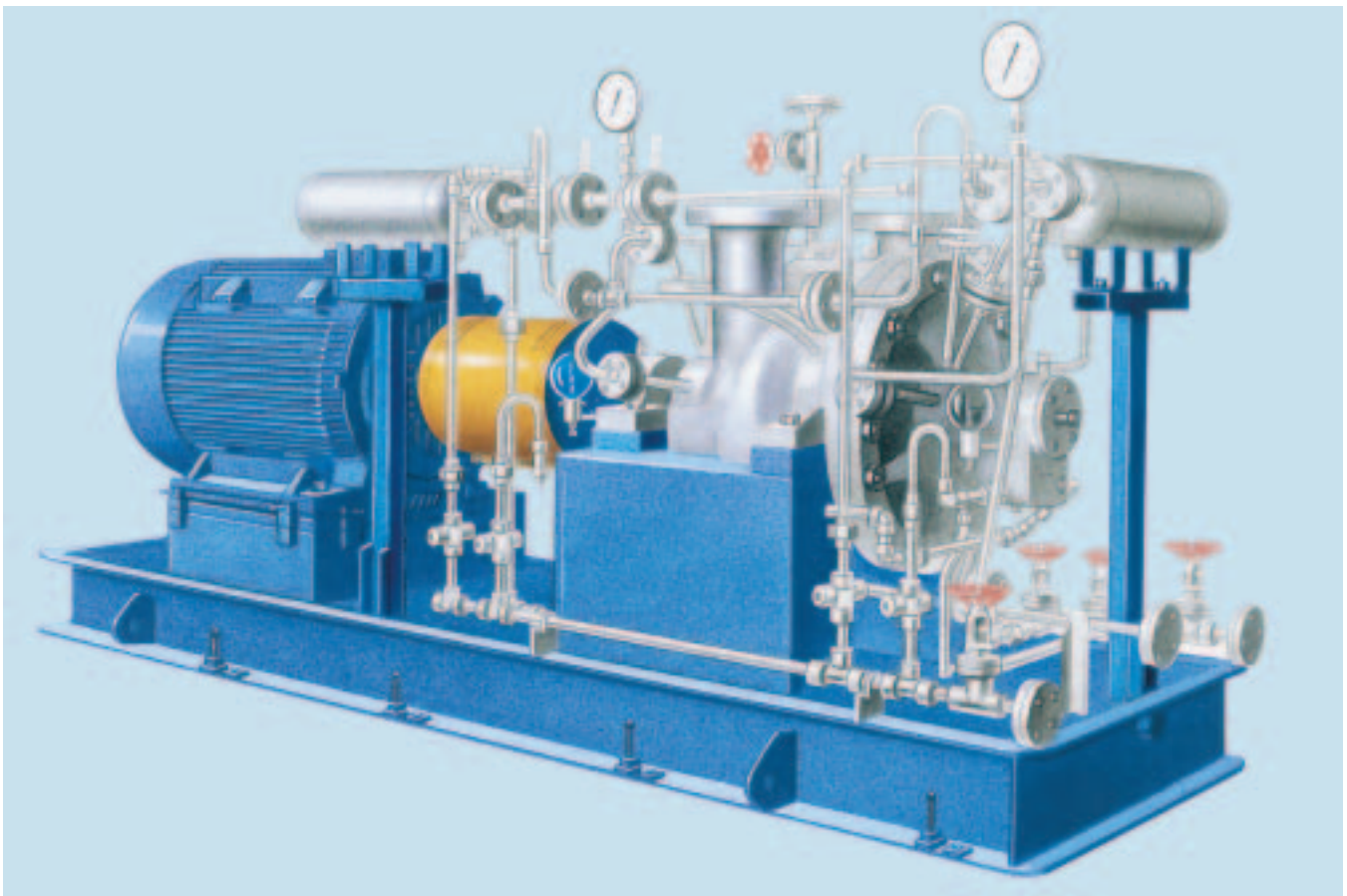




GOULDS PUMPS

Goulds Model 3640

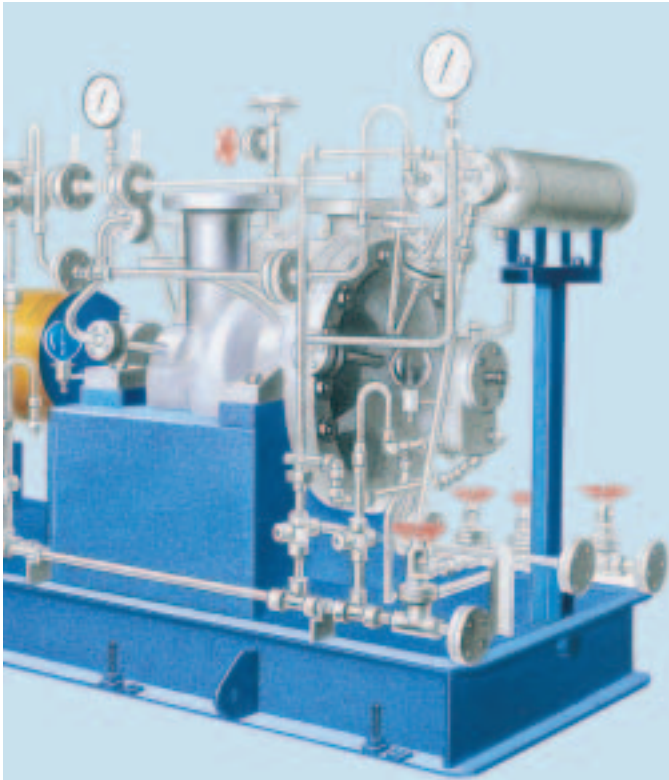
API-610 9th Edition/ISO 13709 Two-Stage Process Pumps



Goulds Pumps



ITT Industries
Engineered for life



Goulds Model 3640 between bearings radially split process pumps are designed for smooth, reliable operation, and meet the toughest specification requirements of API-610/ISO 13709 to assure extended service life.



Goulds Model 3640

Between Bearings Two-Stage Pumps Designed to Meet the Demanding Process Pump Requirements of API-610 9th Edition/ISO 13709

- Capacities to 1500 GPM (340 m³/h)
- Heads to 1400 feet (425 m)
- Temperatures to 850°F (455°C)
- Pressures to 750 PSIG (5170 kPa)

Design Features

Opposed Impeller Design Balances axial loading

Between Bearings Design Improved rotor stability at high speeds and heads

Large Shaft Diameter For low shaft deflection and stable rotordynamic performance

API-610 Full compliance with 9th Edition/ISO 13709

Tangential Discharge Maximum hydraulic efficiency

Finned Bearing Frame

Accommodates high temperatures without need for cooling water

Seal Chamber Meets dimensional requirements of API-610/ISO 13709

Bearing Cooling Air and water cooling available for high temperature services

Rugged Mechanical Design Extra heavy shaft and bearings.

Back Pull-out Construction Designed for one craft maintenance

Centerline Support High temperature stability

Typical Services

Refinery Process feed, reflux, splitter bottoms, high-pressure process transfer



Model 3640 High Pressure/ High Temperature Two-Stage Process Pumps

Heavy Duty Design Features for Refinery and Petrochemical Services

HEAVY DUTY SHAFT

Minimum shaft deflection for extended seal bearing life. Sized to meet deflection and rotor dynamics requirements of API-610/ISO 13709.

RADIAL BALANCE

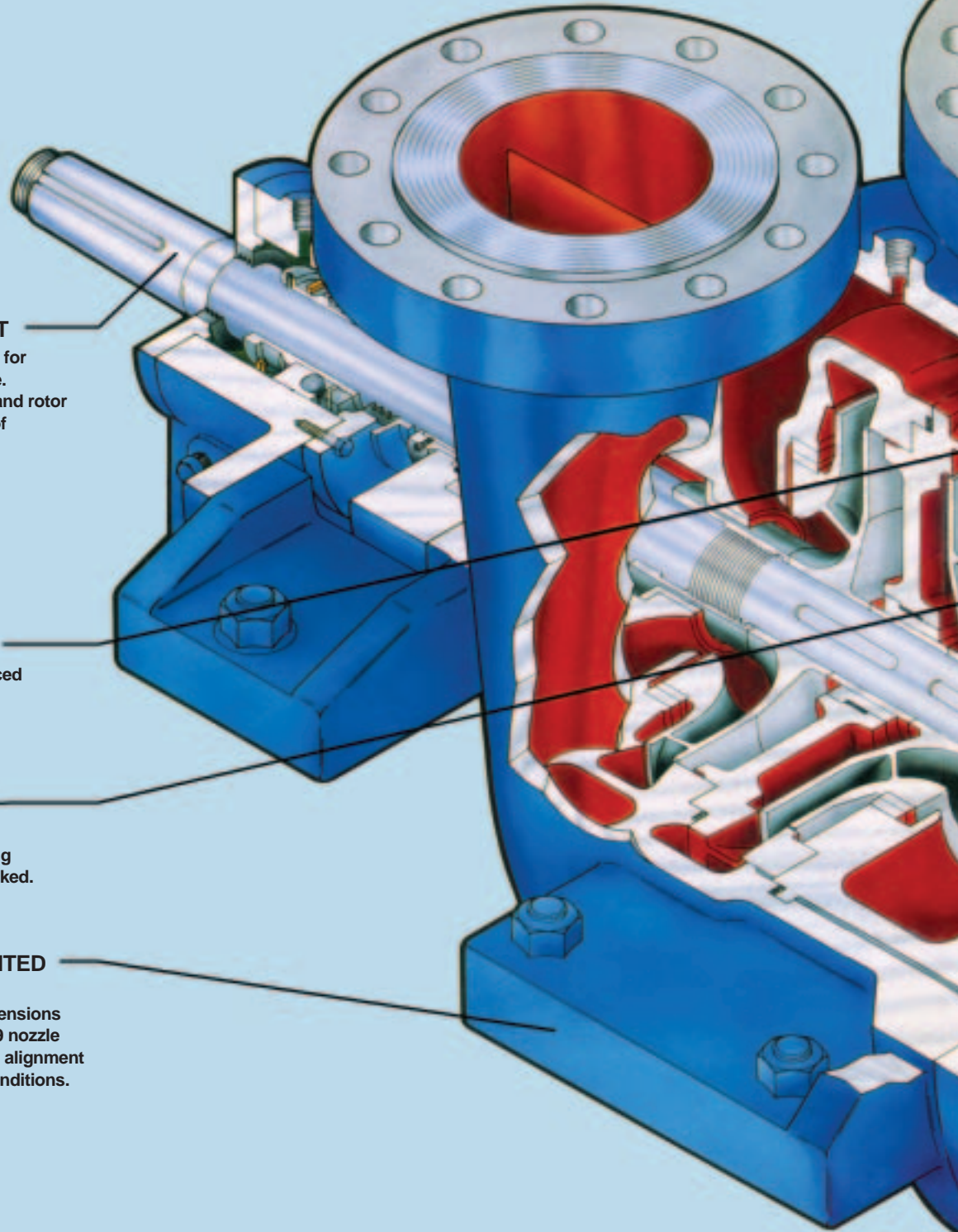
First stage radially balanced by diffuser for minimum shaft deflection.

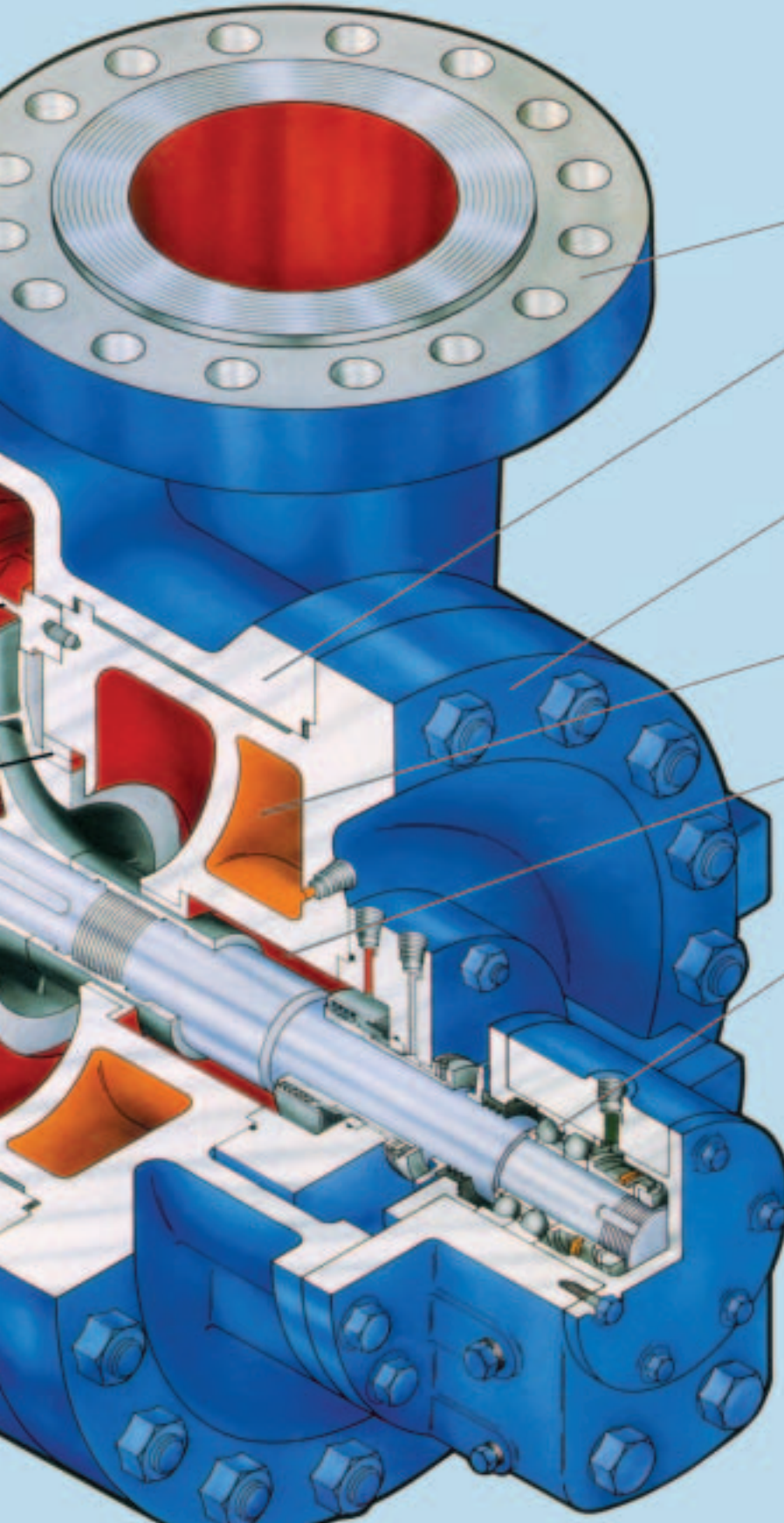
RENEWABLE WEAR RINGS

API-610/ISO 13709 running clearances. Positively locked.

CENTERLINE MOUNTED CASING

Heavy duty mounting extensions accept API-610/ISO 13709 nozzle loads and maintain pump alignment under extreme service conditions.





**CLASS 300 RF
FLANGES STANDARD**
Other classes and facings optional.

RADIALLY SPLIT CASING
Designed specifically for high pressure/
high temperature services.
Fully confined controlled compression
gaskets assure leak-proof sealing.

**CASING HEAD
ON OUTBOARD END**
Allows removal of rotor without disturbing
suction and discharge piping.

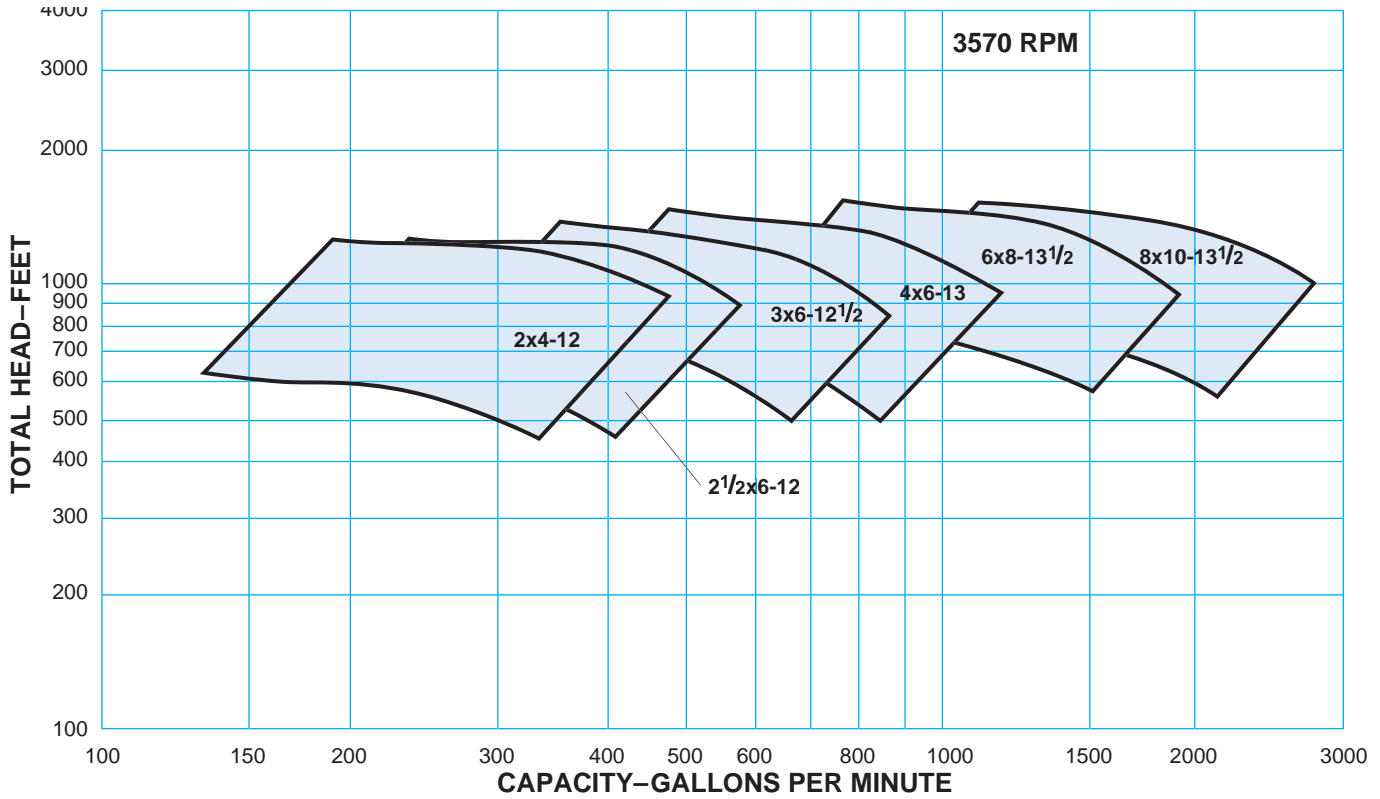
JACKETED SEAL CHAMBERS
Available as required for
service conditions.

**ENLARGED
SEAL CHAMBERS**
Conform to API-610/ISO 13709 dimensional
requirements. Allows use of wide range of
API-682/ISO 21049 cartridge mechanical
seals to meet specific service conditions.

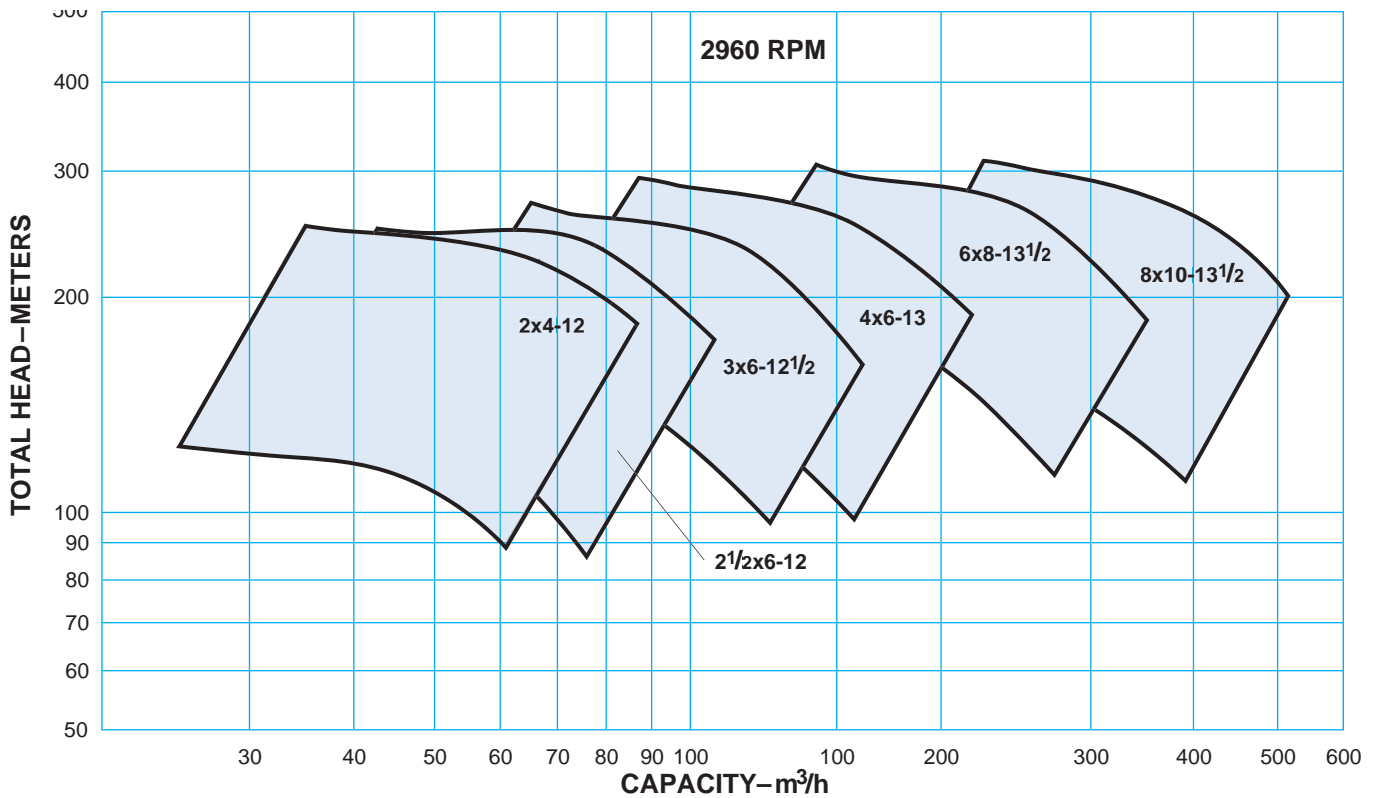
HEAVY DUTY THRUST BEARING
Duplex 40-degree angular contact standard.
Ring oil lubricated. Other bearing
configurations available to meet specific
service requirements.

**OPPOSED IMPELLERS
ARRANGEMENT**
Reduced axial forces for maximum
bearing life. Impellers are driven by
individual keys and positioned on shaft by
dual locknuts. Staggered impeller vane
tips for reduced pressure pulsations
at vane passing frequency.

Hydraulic Coverage 60 Hz

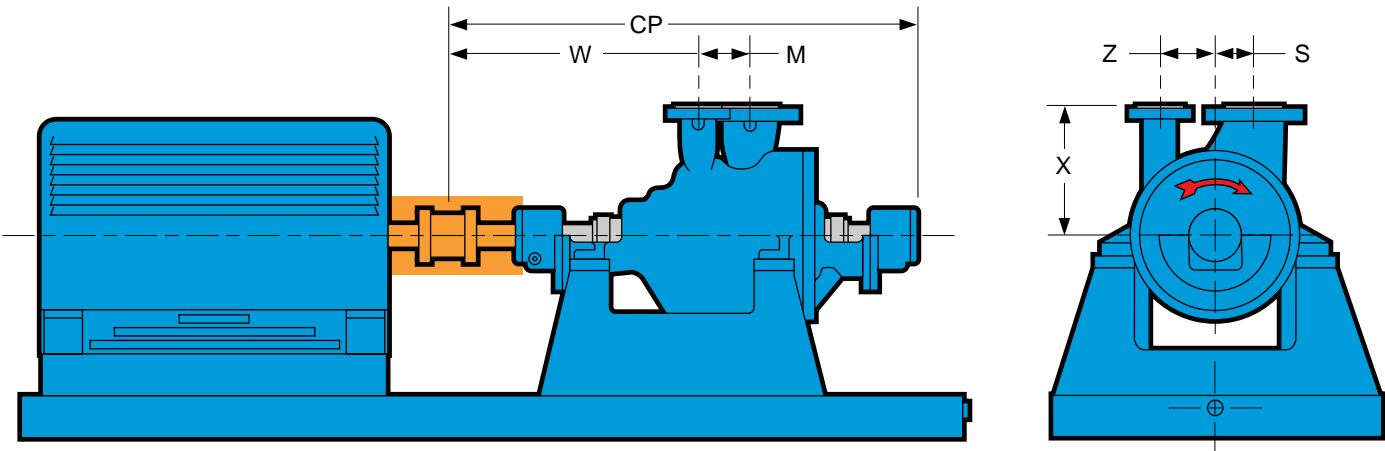


Hydraulic Coverage 50 Hz



Dimensions Model 3640

All dimensions in inches. Not to be used for construction.



DIMENSIONS

Pump Group	Pump Size	CP	W	M	S	Z	X
S	2x4-12	44.28	22.50	6.00	5.75	6.62	12.50
	2½x6-12	44.28	22.50	6.38	4.75	6.81	13.38
M	3x6-12½	47.25	24.75	6.38	5.25	7.25	14.00
	4x6-13	47.25	24.75	6.88	5.75	8.06	15.00
L	6x8-13½	52.94	25.25	8.81	5.12	9.50	16.81
	8x10-13½	52.94	25.25	11.00	7.50	9.50	22.00

Visit our website at www.gouldspumps.com

Goulds Pumps

