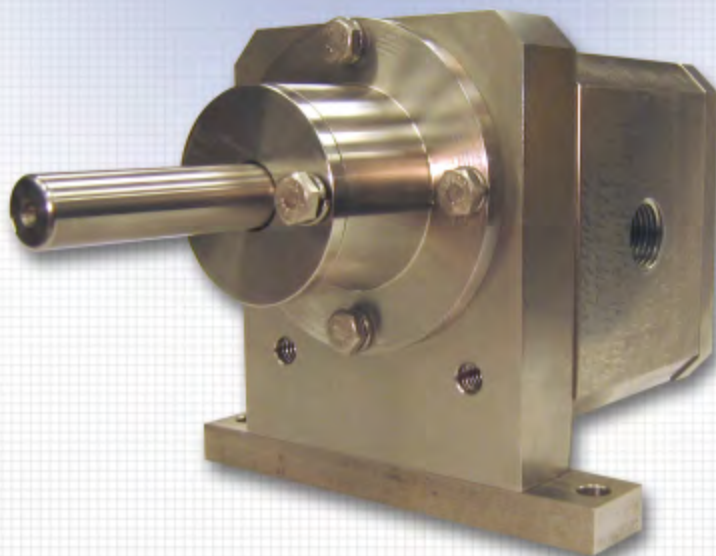


The NPC Series offers:

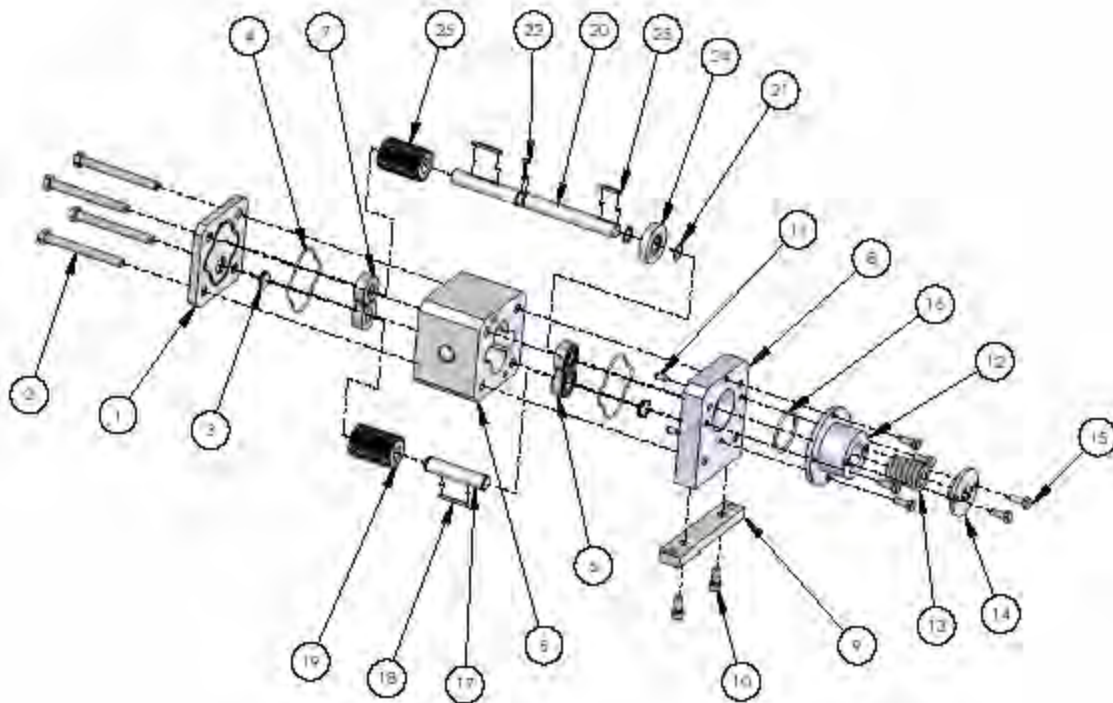
- **Pulse-Free Flow**
- **Metering Precision**
- **Fast and Complete Break Down, Cleaning and Reassembly**
- **Total Rebuildability**
- **Extensive Chemical Compatibility**
- **Initially available in 5, 10 and 15 cc per revolution models**



Patents applied for and pending as of publication

For over 80 years, Northern[®] Pump has been providing the most reliable gear pumps in industry. We pride ourselves on regularly accomplishing for our customers what no other pump company can achieve. And now we have increased our own performance envelope with our new design, the NPC Series pulse-free gear pump.

The NPC Series is truly an advance for the state of the art in gear pump technology.....take advantage of it by installing an NPC Series pump in your coating equipment today.



ITEM	PART #	DESCRIPTION	QTY.
1	3055-4400	END PLATE	1
2	13830006-60	HEX HEAD CAPSCREW	4
3	1745-4400	THRUST DISC	2
4	19120148-90	O-RING (PLATE)	2
5	1129-4400-20	CYLINDER	1
6	1245-4400	BEARING INSERT, FRONT	1
7	1246-4400	BEARING INSERT, REAR	1
8	2035-4400	ADAPTER PLATE	1
9	7211-4400	MOUNTING PLATE	1
10	13850005-12	SOCKET HEAD CAP SCREW	2
11	4594-4400	DOWEL PIN	2
12	1630-4400	STUFFING BOX	1
13	6404-4400	PACKING SET	1
14	1523-4400	PACKING GLAND	1
15	13830004-12	HEX HEAD CAPSCREW	6
16	19120223-90	O-RING	1
17	4951-4400-20	DRIVEN SHAFT	1
18	4593-4400	GEAR KEY	2
19	4661-4400-20	HELICAL PUMP GEAR, RIGHT	1
20	4860-4400-20	DRIVE SHAFT	1
21	61920-04	RETAINING RING	2
22	4592-4400	THRUST WASHER KEY	1
23	4595-4400	END KEY	1
24	1686-4400	THRUST WASHER	1
25	4681-4400-20	HELICAL PUMP GEAR, LEFT	1

Specifications:

Flow: 5, 10 and 15 cc/rev
 Pressure: 100 psi
 Temperature: 150 °F
 RPM (max): 250
 Inlet/Outlet: 3/4" NPT
 Gear Type: Helical
 Flows (@ max rpm):
 1.25, 2.5 and 3.75 lpm

Materials of Construction:

Pump Body: 316 Stainless Steel
 Gears: 17-4 Stainless Steel
 Bearing Insert: Glass-filled PTFE

Options:

Seal: Lip, Packing
 Inlet/Outlet: NPT, Bolt-on adapters